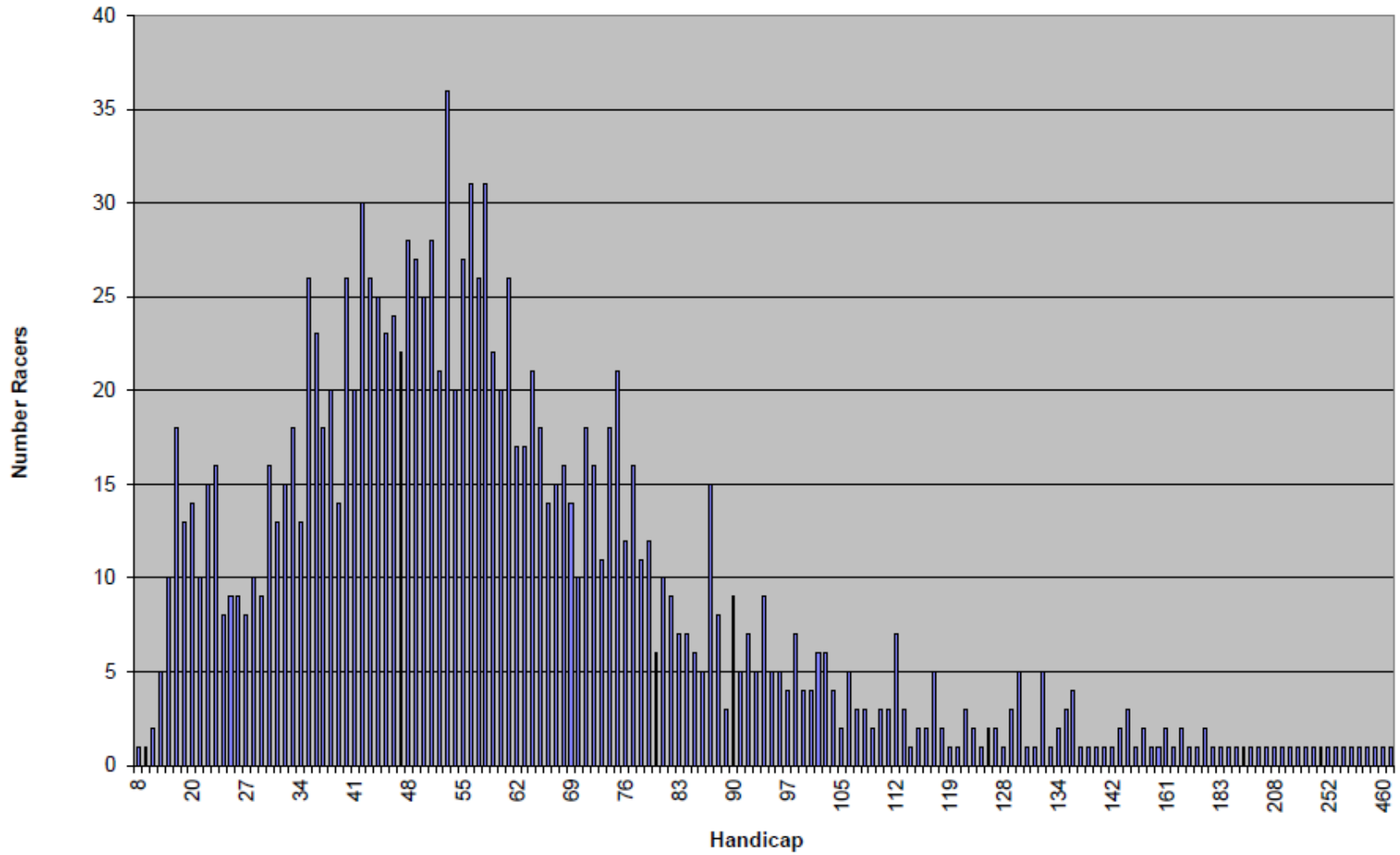


As the demographics of PACRAT racers change, the board occasionally will look to adjust class handicap barriers to maintain appropriate spacing. The last adjustment to classifications was 5+ years ago. In a review of results for the past 5 seasons, it was apparent that some tweaking of classification handicap barriers was needed. As with many group activities, PACRAT results tend to follow a bell shaped curve (see attached). PACRAT tries to set class barriers to keep the handicap spread reasonably narrow with the top and bottom groups having larger spreads to capture sufficient racers to allow for reasonable competition/point distribution. Using results from the past 5 years and cutoff points of 8% of results for Elite, the next 13% for Expert, the next 18% for Advanced, the next 22% for Adv. Intermediate, the next 18% for Intermediate, the next 13% for Novice, and the last 8% for Beginner, the following classification adjustments have been established starting with the 2014 season:

	Female		Male	
	Existing HDCP	New HDCP	Existing HDCP	New HDCP
Elite	0.0 – 20.9	0.0 – 25.0	0.0 - 14.8	0.0 – 15.0
Expert	21.0 - 35.9	25.1 – 37.0	14.9 - 21.4	15.1 - 22.5
Advanced	36.0 – 44.9	37.1 - 48.5	21.5 - 28.9	22.6 – 30.0
Adv Int	45.0 – 59.9	49.6 - 60.5	29.0 - 40.4	30.1 – 41.0
Intermediate	60.0 - 77.4	60.6 – 77.0	40.5 – 49.9	41.1 – 50.0
Novice	77.5 – 95.0	77.1 – 106.0	50.0 – 65.0	50.1 – 66.0
Beginner	95.1 and up	106.1 and up	65.1 and up	66.1 and up

We went back to the 2013 season and re-did results using the new classification handicap barriers to establish the appropriate class returning racers will start from for the upcoming season. Out of 219 racers, the new classification handicap barriers resulted in approximately 25 racers changing classes.

# PACRAT HDCPS - FEMALE



# PACRAT HDCPS - MALE

